

ADDENDUM NUMBER TWO

for

**USC Women's Basketball Offices and Team Spaces
Project No.: U-787-14-6**

State Permanent Improvement Project No.: H27-Z196

COLUMBIA, SOUTH CAROLINA

PREPARED BY:

The Boudreaux Group 1330 Lady Street, Columbia, SC 29201

DATE OF ISSUE: March 27, 2015

TO: ALL BIDDERS OF RECORD, CONSULTANTS, OWNER:

The following items shall take precedence over the drawings and specifications for the above named project and shall become a part of the contract documents. Where any item called for in the specifications, or indicated on the drawings, is not supplemented hereby, the original requirements shall remain in effect. Where any original item is amended, voided or superseded hereby, the provisions of such item not specifically amended, voided or superseded shall remain in effect.

CONTRACTOR SHALL ACKNOWLEDGE RECEIPT OF ADDENDUM.

This addendum consists of 3 pages and the following pages: M1.1_R1

I. Architectural Prior Approvals:

1. Sunflex Wall Systems LP is **NOT** approved as an equal for the Folding Glass Door System
2. HUF COR's Frameless Glasswall Panel System Series GL1 is approved as an equal for the Folding Glass Door System
3. SWFcontract Manual Solar Shades are approved as an equal for the Roller Window Shades

II. Electrical Prior Approvals:

Lighting Fixtures – Subject to compliance to project specifications, the following are acceptable for bidding:

<u>Type</u>	<u>Manufacturer</u>	<u>Catalog Number</u>
A/AE	COOPER H.E. WILLIAMS	2RDI-332RP-UNV-EB81-U (TYPE AE WITH EL1400) DIG-S24-332-WPR-EQCLIPS-EB8P3-UNV (AE WITH EM1400-T8)

USC Women's Basketball Offices and Team Spaces
Addendum Number Two

B	COOPER H.E. WILLIAMS	2RDI-217RP-UNV-EB81-U DIG-S22-217-WPR-EQCLIPS-EB8P2-UNV
C/CE	COOPER JUNO	LD6A20D010TE (EMBOD)/ERM6A20835/6LM1LI L6-23352-G2/L600P-CQ (CE WITH BR OPTION BATTERY PACK)
D	SCOTT ARCH	3690-24-1FP24-FINISH
J	LUMENPULSE	LCNRO-277-84"-35K-CL-WH-NO
K	JUNO	IC1422LEDG4-35K-U/21-PW
L	COOPER JUNO	LD6A10D010TE/ERM6A10835/6LM0LI L6-1335U-G2/L600P-CQ
M	COOPER JUNO	LD6A10D010TE/ERM6A10835/6LW110LI L6-1335U-G2/L600WS-CQ
Controls	COOPER CONTROLS	OAC-U-1000; OAC-U-0501; OAWC-DT-120W-R; SP20-MV

III. Mechanical Prior Approvals:

NOTE: The following amendments, additions, and deletions shall be made to the Construction Documents and Contract Documents. Insofar as those documents are at variance with this Addendum, this Addendum shall govern.

Revision: The following additional manufacturers are prior approved to bid this project:

VAV Boxes: Trane, Price, Titus, Nailor, Carrier, Metalaire

Exhaust Fans: American CoolAir

Dampers: Ruskin, Greenheck, NCA, Pottorff, Arrow United, Nailor

Air Distribution: Nailor

IV. Architectural:

Specifications

<u>Item No.</u>	<u>Description</u>
1.	<u>Revision:</u> Reference_Section 087100 – Door Hardware: Provide Best locks and cores or locks that can receive Best cores to be compatible with University of South Carolina keying system.

V. Electrical:

Drawings

<u>Item No.</u>	<u>Description</u>
1.	<u>Revision:</u> Reference Drawing E1.0 – In Lighting Fixture Schedule, change allowance for type F from \$750 to \$2000 per fixture. Change allowance for type H from \$1250 to \$2000 per fixture. Electrical contractor shall install and warranty these fixtures.
2.	<u>Revision:</u> Reference Drawing E1.0 – In short corridor adjacent to center stairwell (common wall with Office 205), provide one (1) type B light fixture with 1400 lumen battery pack. Control this fixture along with other corridor fixtures via occupancy sensor.
3.	<u>Revision:</u> Reference Drawing E1.0 – At east end (toward top of plan) of Corridor 209, provide chevron pointing to the south toward center stairwell.
4.	<u>Revision:</u> Reference Drawing E2.0 – In Office 201, provide one 1-1/4” conduit from each TV box to AV j-box at desk location (similar to Note 1). Coordinate exact locations of all boxes in this space with Architect before rough-in.
5.	<u>Revision:</u> Reference Drawing E2.0 – In Conference 210, provide one power/data/AV floor box in center of space (coordinate exact location with Architect for coring floor). Similar to Note 13, except duplex receptacle and AV/data sections in lieu of furniture feeds.
6.	<u>Revision:</u> Reference Drawing E2.0 – In Note 9, new receptacle shall be fed with dedicated 20 amp circuit.

VI. Mechanical:

Drawings

<u>Item No.</u>	<u>Description</u>
1.	<u>Revision:</u> Reference Drawing M1.1_R1: Added medium pressure duct takeoff, low leakage manual damper, return grille, and return air transfer to the Elec/Comm Closet between Office 206 and the Stair
2.	<u>Revision:</u> Reference Drawing M1.1_R1: Renovation Note 3 was modified and Renovation Note 4 was added.

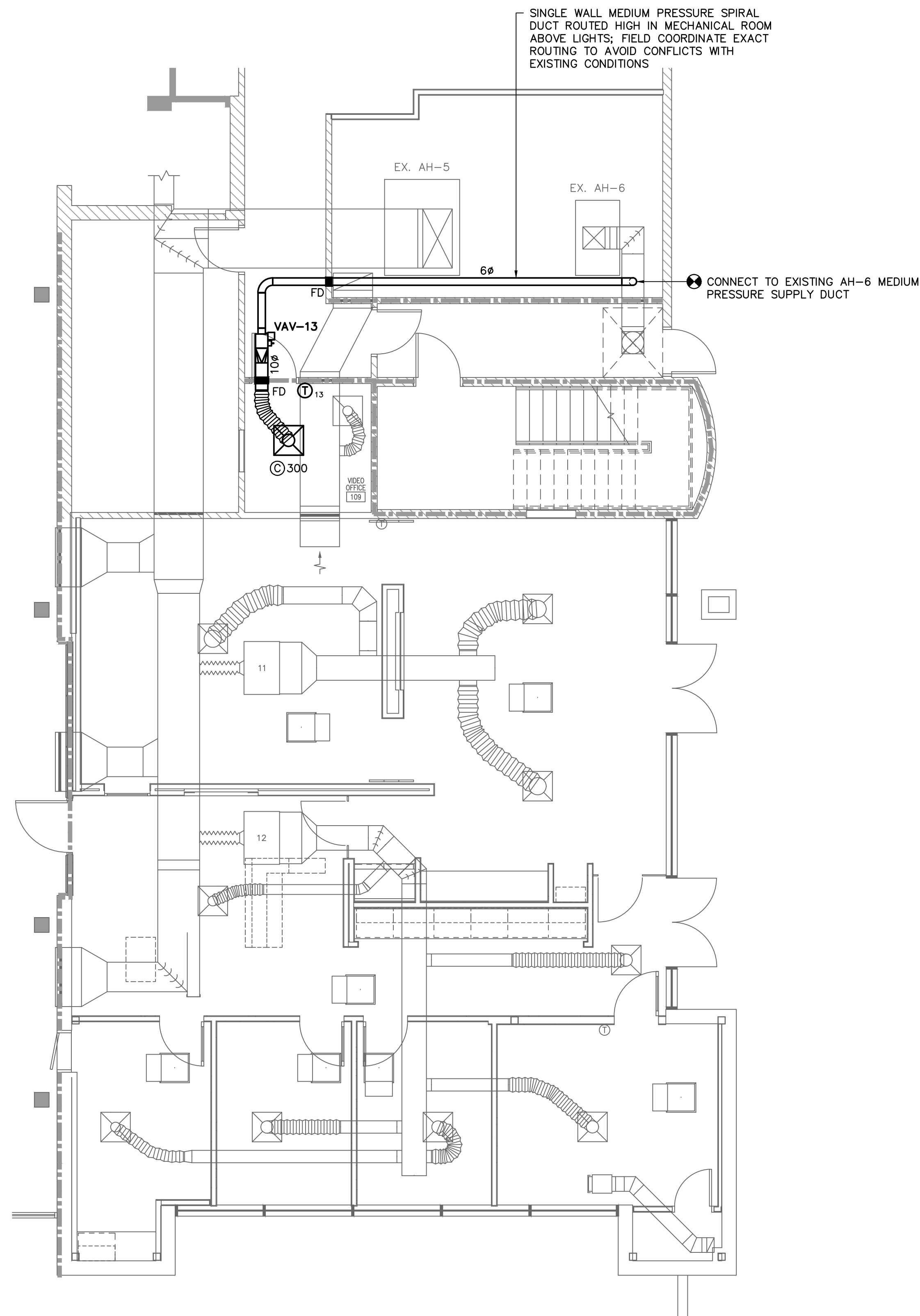
VII. Questions:

- Question: Is the entire guard/handrail system being replaced?
Answer: No. The steel posts, steel base & stainless steel rails will remain but the steel cables will be replaced with glass panels attached with stainless steel clips as detailed in the construction documents.

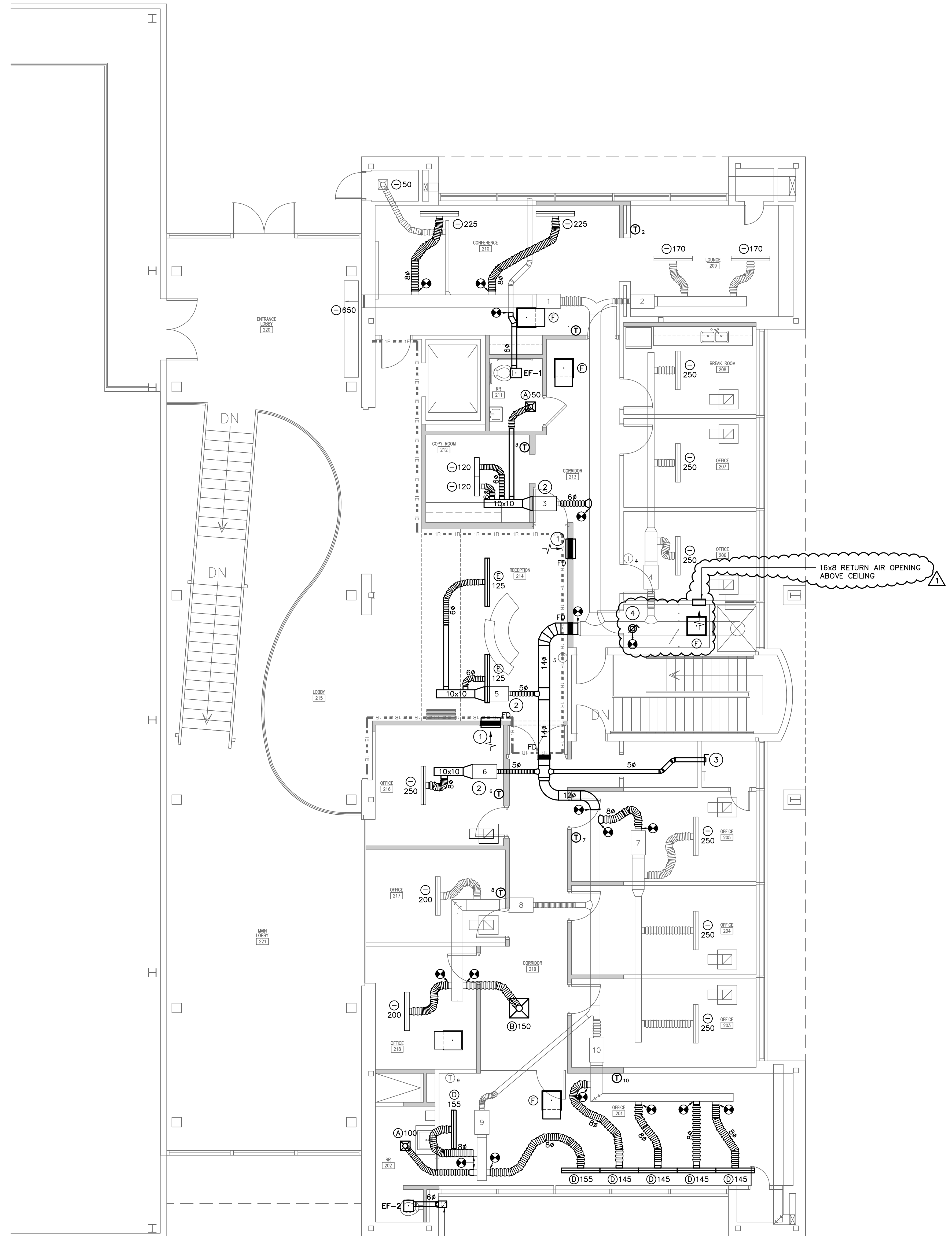
END OF ADDENDUM

RENOVATION NOTES

- 1 24x18 RETURN AIR OPENING ABOVE CEILING WITH FIRE DAMPER.
- 2 RELOCATED VAV BOX. EXTEND HOT WATER SUPPLY AND RETURN AS REQUIRED. FIRE SEAL ALL HOT SUPPLY AND RETURN PIPE PENETRATIONS AT FIRE RATED PARTITION.
- 3 EXTEND MEDIUM PRESSURE SPIRAL DUCT THROUGH WALL AND TERMINATE WITH LOW LEAKAGE MANUAL DAMPER EQUAL TO GREENHECK MODEL VCDR-53 WITH LOCKING HAND QUADRANT.
- 4 EXTEND 8"Ø MEDIUM PRESSURE SPIRAL DUCT DOWN THROUGH EXISTING CEILING AND TERMINATE WITH LOW LEAKAGE MANUAL DAMPER EQUAL TO GREENHECK MODEL VCDR-53 WITH LOCKING HAND QUADRANT.

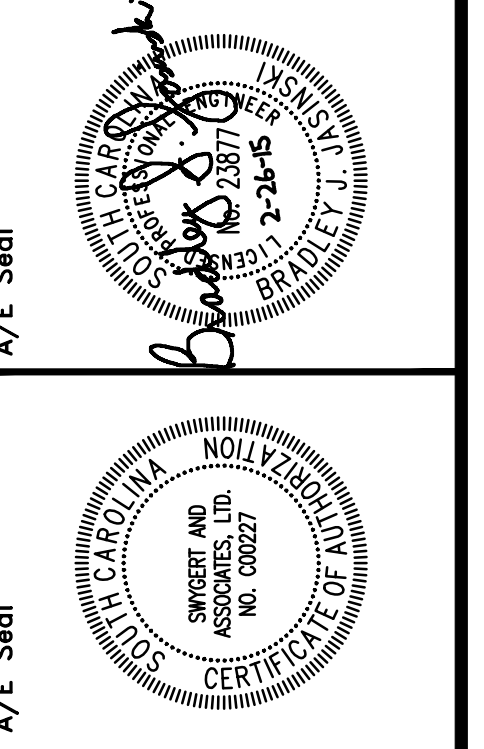


1 PARTIAL FIRST FLOOR PLAN
SCALE: 3/16" = 1'-0"



2 SECOND FLOOR PLAN
SCALE: 3/16" = 1'-0"

PROVIDE 8"x6" PRICE MODEL 630, OR APPROVED EQUAL, ALUMINUM SOFFIT GRILLE



WOMEN'S BASKETBALL OFFICES AND TEAM SPACES
UNIVERSITY OF SOUTH CAROLINA
STATE PROJECT #H27-Z196
CONSTRUCTION DOCUMENTS
COLUMBIA, SOUTH CAROLINA

Project No.	Date	Drawn By	Check By
U-787-14-6	02.26.15	BUJ	BUJ

Revisions:

No.	Name	ADDENDUM #2
1		

DATE: 03.27.15

FIRST AND SECOND FLOOR PLANS

Drawing No. **M1.1**

Swygert & Associates
CONSULTING ENGINEERS

DBA Swygart & Assoc., Ltd. Telephone: (803) 791-9300
Post Office Box 11880 Focamine: (803) 791-0630
Columbia, S.C. 29211 mail@swygart-associates.com